

EVIDEN

SAP Sapphire 2023

Enterprise Employee Engagement from Eviden

an atos business

Enterprise Employee Engagement from Eviden

Why invest in enterprise employee engagement?



Enterprise employee engagement as a business enabler



Flexible working is on the rise

34%

Would leave a job if forced to return to the office ³



Empathy fosters engagement

4.6 times

Increased engagement when employees feel they are being heard ²



Mental health issues are rising

50%

Upsurge of economic costs related to mental health during pandemic ⁴

Enterprise Experience and Engagement



23%

Higher ¹ Profitability

1 [Gallup](#)

2 [inc.com](#)

3 [Fox business](#)

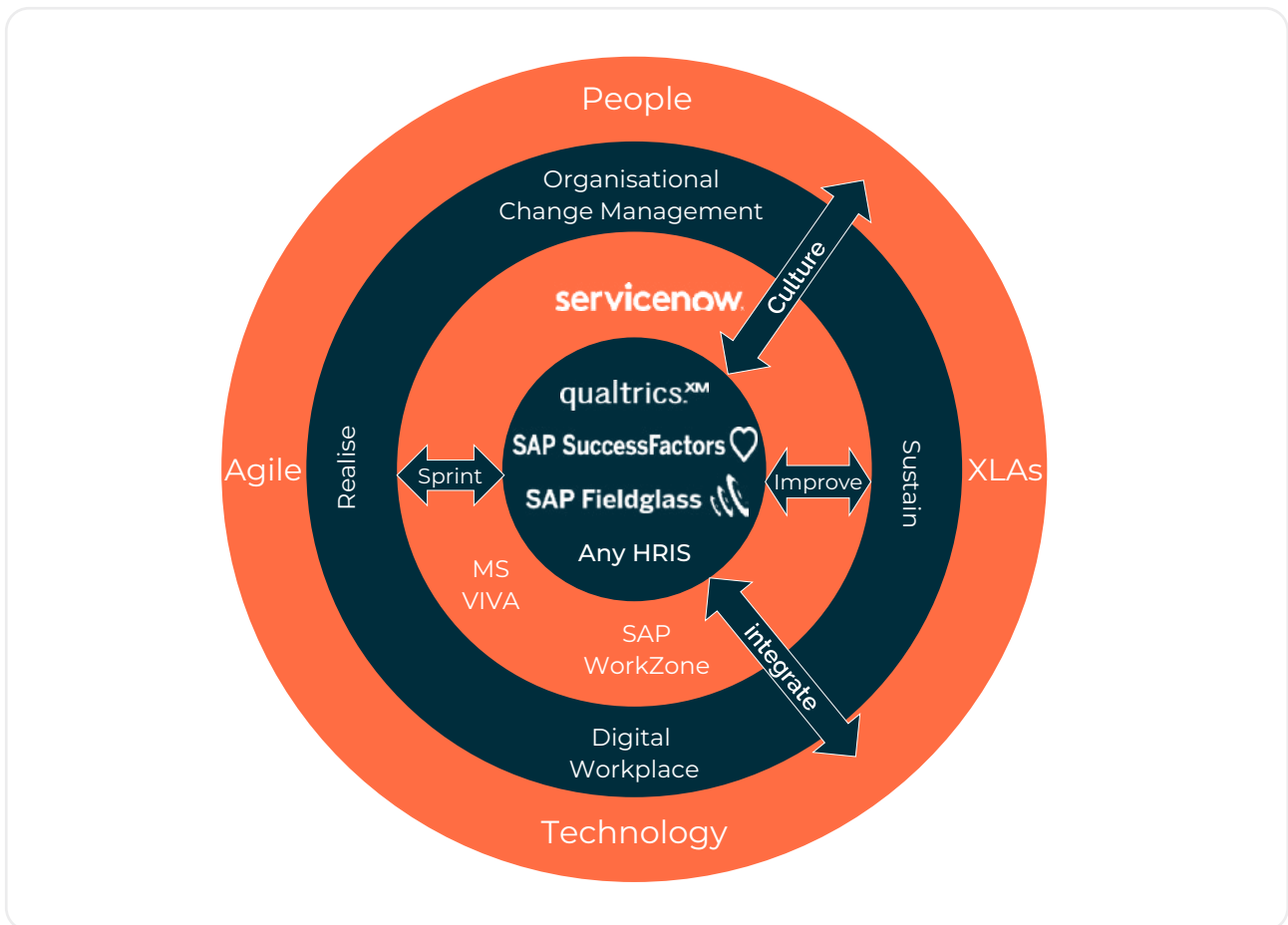
4 [McKinsey](#)

Enterprise Employee Engagement from Eviden

Building on the insight of HR digital transformation customer feedback and the experience of our software as a service cloud practices, Eviden has invested in integrating several core platforms alongside our methodology for managing HR digital transformation to deliver a new generation of employee experience capabilities to our clients

Eviden has built best practice processes and know how on top of supplier content, and leveraged automation, workflow and AI capabilities to develop a best-in-class suite of integrated HR and talent management processes.

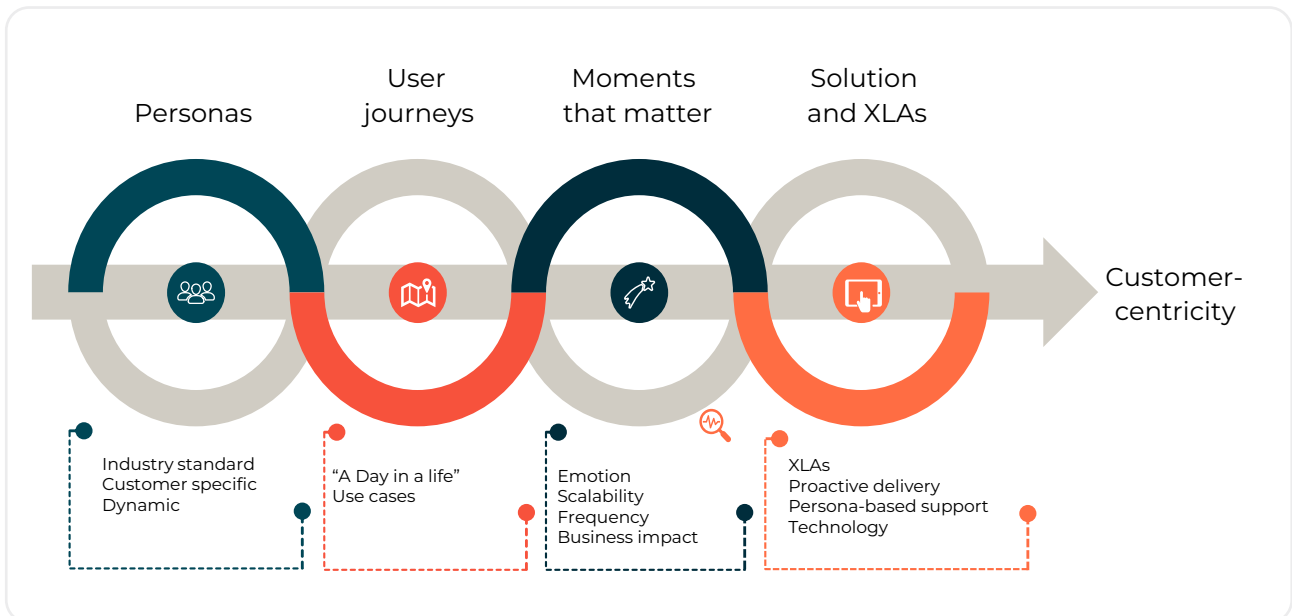
We deliver in an agile fashion and work in DevOps mode for application support for large global corporations, enabling them to deliver a backlog of process automations and integrations to the HR business.



Enterprise Employee Engagement from Eviden

We combine our Digital Consulting, ServiceNow, SAP SuccessFactors and Qualtrics EX practices to deliver the right design, iteratively build on a fit gap methodology, and measure the ongoing success and adoption for life after project. And it doesn't stop there.

We continue to extend the solution with new use cases, and by developing entirely new, guided, fully digitalized processes using SAP WorkZone Business Technology Platform. These processes are able to run on mobile as well as desktop applications. We move clients towards experience level agreements (XLAs), measuring the moments that matter to an employee.



Enterprise employee engagement from Eviden

Four steps to moving to a new enterprise employee engagement model:



1. Understand the now and the future

Your teams will need an in-depth understanding of the infrastructure, applications and HR, feedback and IT processes that your business runs on to ascertain how and where to transform.

2. Develop your strategy

There is no one-size-fits-all approach to migrating to modern employee experience solutions. We will help you define where you're going and how you will get there, including personas, key user journeys and target XIA's with Eviden templates and accelerators

3. Manage risks and change

Our digital consulting practice will provide a strong communication approach needed to socialize process changes with stakeholders and champion the change.

4. Secure the right expertise and resources

Eviden is a partner that empowers your business with the right blend of technical expertise and service excellence to achieve success.

Why choose Eviden?

- “
 - Honest engagement from a company than runs this solution ourselves
 - Long term partnership from discovery through to run state phases
 - Knowledge enablement of your people
 - Technical expertise from people that have done this many times before
 - Collaboration joint teamwork is our preferred way of working
 - Cloud expertise and experience to hold your hand through the process ”

For more information please contact:
sapppractice@eviden.com

Connect with us



eviden.com

Eviden is a registered trademark © Copyright 2023, Eviden SAS – All rights reserved.

ECT-230417-JR-BR-EEE SAP SAPPHIRE