

EVIDEN

Digital Technology Strategy & Innovation

Supporting the IT function
to deliver the Digital Transformation

Jasper Bremer
Head of Digital Technology Strategy & Innovation

Digital Technology Strategy and Innovation

Four key capabilities



IT Strategy & Operating Model

Solution to support the CIO to organize and deliver the IT enabling the digital transformation. Includes:

- IT Operating Model
- IT Strategy
- ITIL/SIAM
- Cost Reduction
- (Scaled) Agile way of working
- DevOps
- IT4IT



Digital Workplace & Employee Experience

Solutions that provide employees with better ways to connect, communicate and collaborate to accelerate business performance. Focusing on:

- People
- Places
- Platforms



Architecture & Innovation

Solutions that provide architecture and innovation services, Including:

- Enterprise Architecture
- Technology Trends
- Innovation management
- Business and Innovation workshops



Cloud & Application Transformation

Solutions that provide cloud and application transformation program Includes:

- Cloud Assessment
- Cloud Transformation
- Application Transformation
- Application Rationalization
- Application Modernisation
- Merger/ Divestments

Common challenges where our IT Operating Model value proposition can help clients

How can IT organisations exploit technology to create new, or modify existing business models, processes and customer experiences to meet changing business needs and market requirements



How can we adopt cloud and integrate cloud services into our technology landscape?

How can we identify and eliminate waste and inefficiency in the current organisation?

How can we combine or carve-out IT organisations to better serve the business needs?

How can IT facilitate the merger, demerger or acquisition of business units?

How can we achieve sustained operational excellence in IT?

How should IT be organised and who should be part of the organisation?

How can we improve the operational resilience of the critical services we provide to the business?

How can IT become more agile in order to support the rapid change and delivery now demanded by digital business?

How can our IT organisation adopt DevOps?

How does IT help the business exploit its data assets to gain new insights and gain competitive advantage?

How can we improve our customer experience and satisfaction?

We need to modernise key business platforms and transform the way we deliver these to the business

The Digital / Hybrid Workplace Proposition

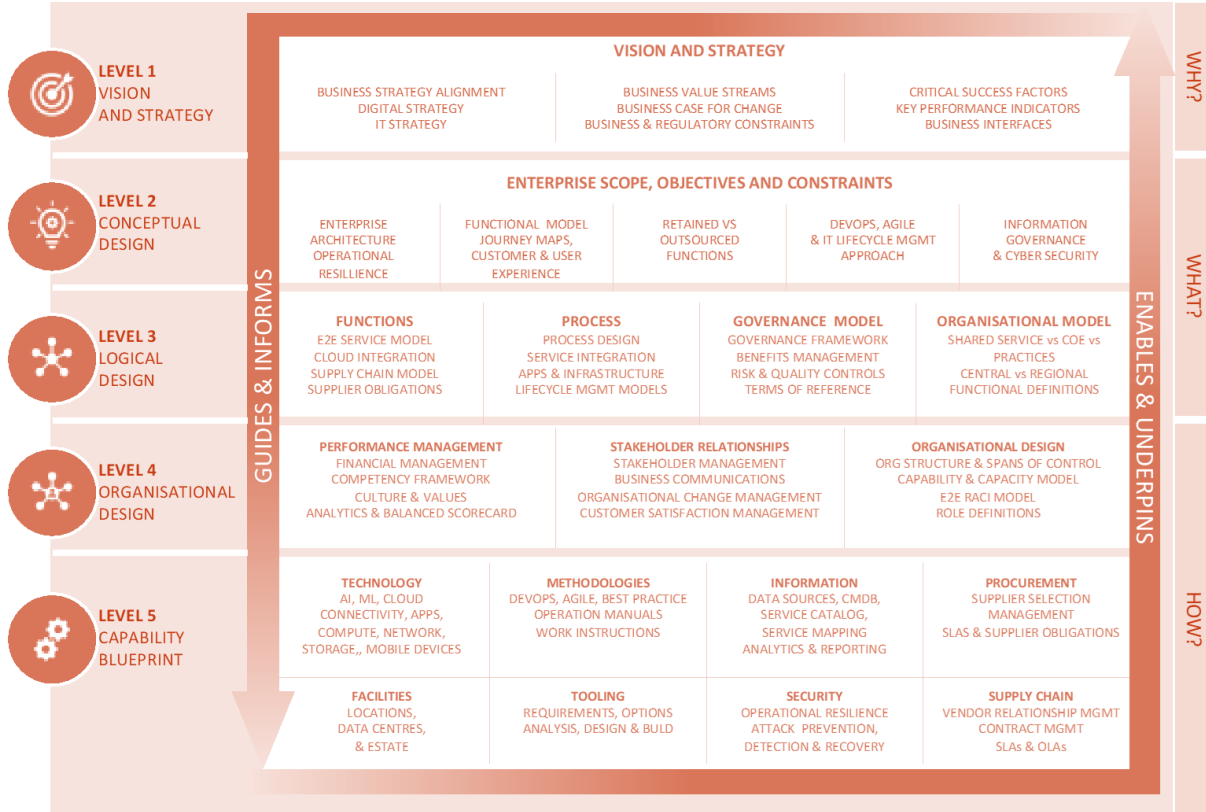
Enabling our client's workforce to be more productive, more creative, more collaborative, more engaged through a transformed workplace supporting modern and hybrid working styles

Our Offering	People - Defining the employee experience	Places - Creating effective and productive workplace environments	Platforms - Embed Digital Workplace Platforms
<p>Key questions we address</p>	<ul style="list-style-type: none"> • How do organisations unlock greater levels of productivity? • How does experience translate to productivity improvements and what is the business case? • How can the employee experience be transformed through business and technology change? • What will the employee journey and associated user experience look like in the future to deliver the expected productivity benefits? 	<ul style="list-style-type: none"> • How to enable new and remote/hybrid ways of working through the design and digitisation of employee's working environments? • How to create intelligent environments, buildings and smart infrastructure that deliver better/more relevant and safe services to employees (e.g. indoor navigation, environment controls, social distancing)? • How to couple physical and digital experiences to deliver contextually relevant information and services that engage and support employees 	<ul style="list-style-type: none"> • Next-generation Digital Workplace (DWP) drives a step-change in productivity, collaboration, creativity, motivation. As you deploy new tools for your people (e.g. O365/G-Suite, SaaS, enterprise social networks, analytics, bots), how to ensure optimal adoption? • What are the technologies needed to enable and support effective remote/hybrid ways of working? • How to take a holistic view of work, what governs it (e.g. HR policies), the environment (e.g. office design), with how to support people to use and exploit the new digital tools?
<p>Clients</p>	<p>BBC, Wellcome Trust, Experian, Sellafield, Pearson, Nestlé, Humana, Seqirus</p>	<p>Nokia Smart Buildings, MBDA, IAG Airport Transformation, PMI, Sellafield</p>	<p>Baloise, Bayer, BBC, DAF, Michelin, Novartis, Nestlé, Once, Pearson, Sanofi, Sellafield, Swiss Re, Dept of Health, Ministry of Justice, NHS West Herts</p>

ITOM Framework

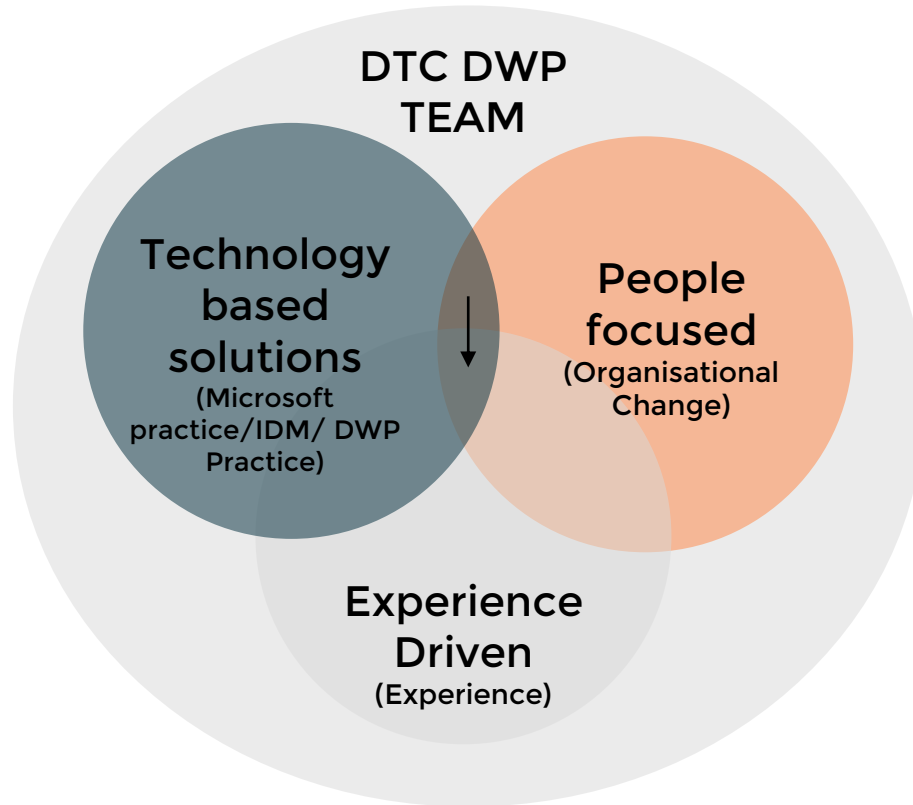
Framework for Developing an Operational Blueprint

- ✓ The ITOM methodology uses a top-down holistic approach to align the IT objectives, process, organisation and capabilities with the business and IT strategy in order to develop an operational blueprint for IT.
- ✓ The ITOM methodology is as an adaptable portfolio of tools and accelerators to determine how an IT organisation needs to change in order to improve performance or meet new challenges.
- ✓ The framework helps clients understand and prioritise why they need to change, what needs to change and how will this change will be implemented in an enduring way.
- ✓ Current and target ITOM blueprints are developed that identify the activities needed to deliver a future mode of operation. Transition states and success criteria are developed to deliver the transformation.



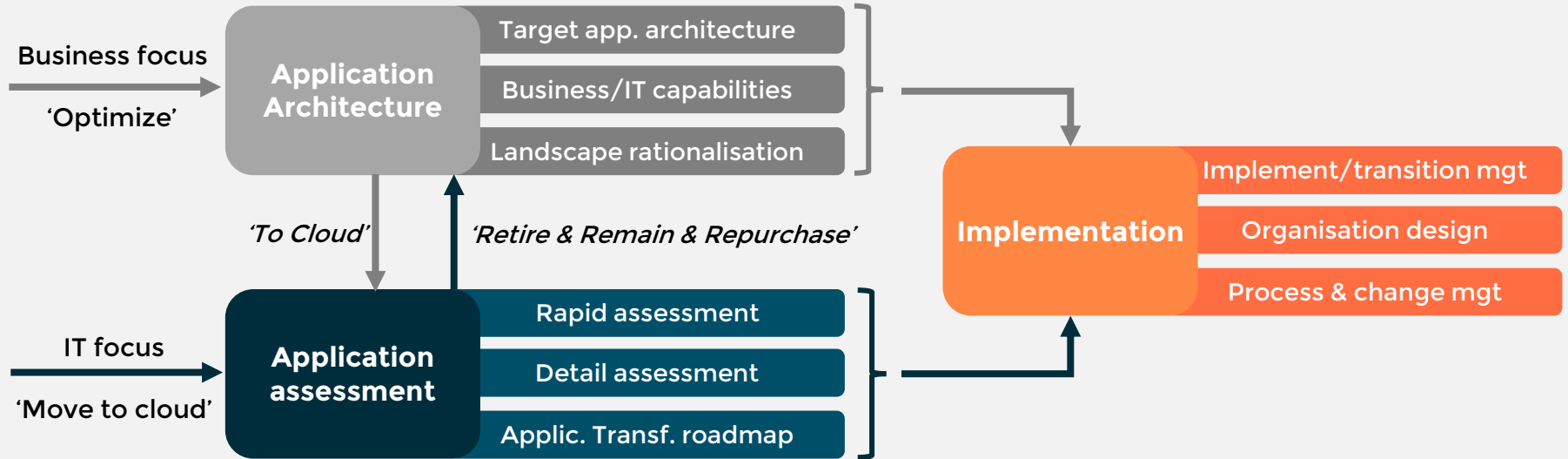
Digital / Hybrid Workplace Proposition

Proposition is technology agnostic and led by the DTC DWP team, although is often co-delivered with other practices from across Atos



Application Transformation

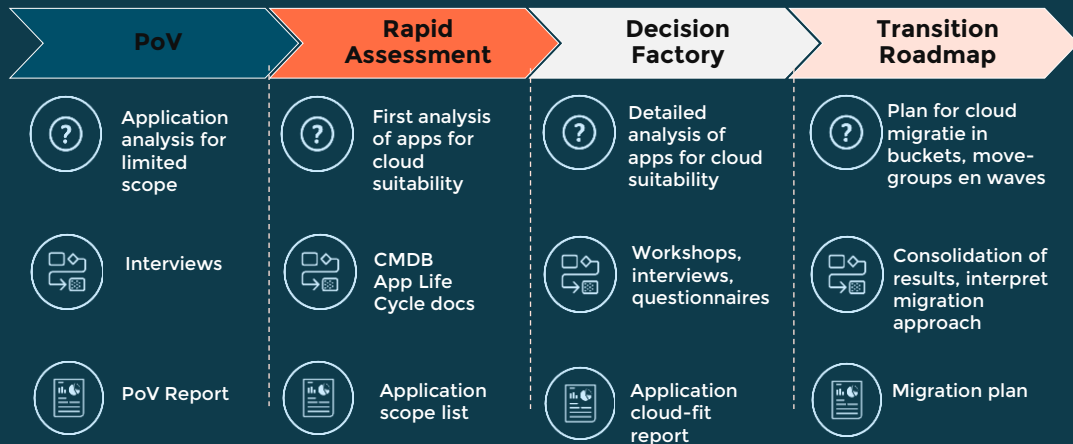
Application optimizing and move to cloud



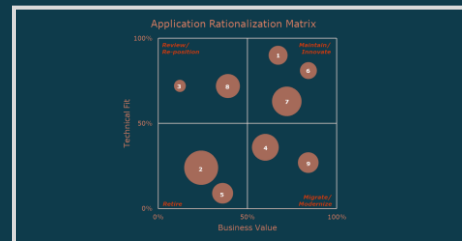
Application assessment

Decision factory to obtain IT view on application transformation scope

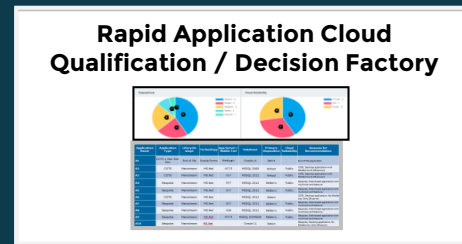
- Based on an agreed application scope, both the business value and infrastructural application aspects are input for the execution of a **Rapid application qualification** and/or a detailed **Decision Factory** assessment
- Usually the start is a very limited set of applications in a Proof of Value
- The output of this phase is an **application transformation roadmap** document for the applications in scope



APR



RACQ/DF

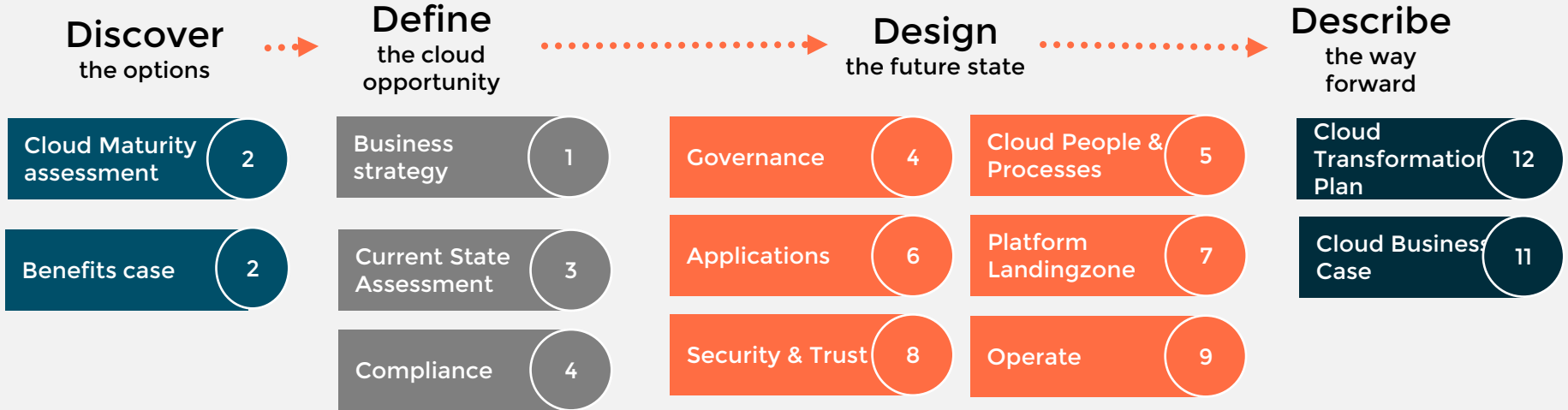
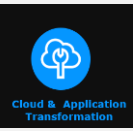


Security Scan



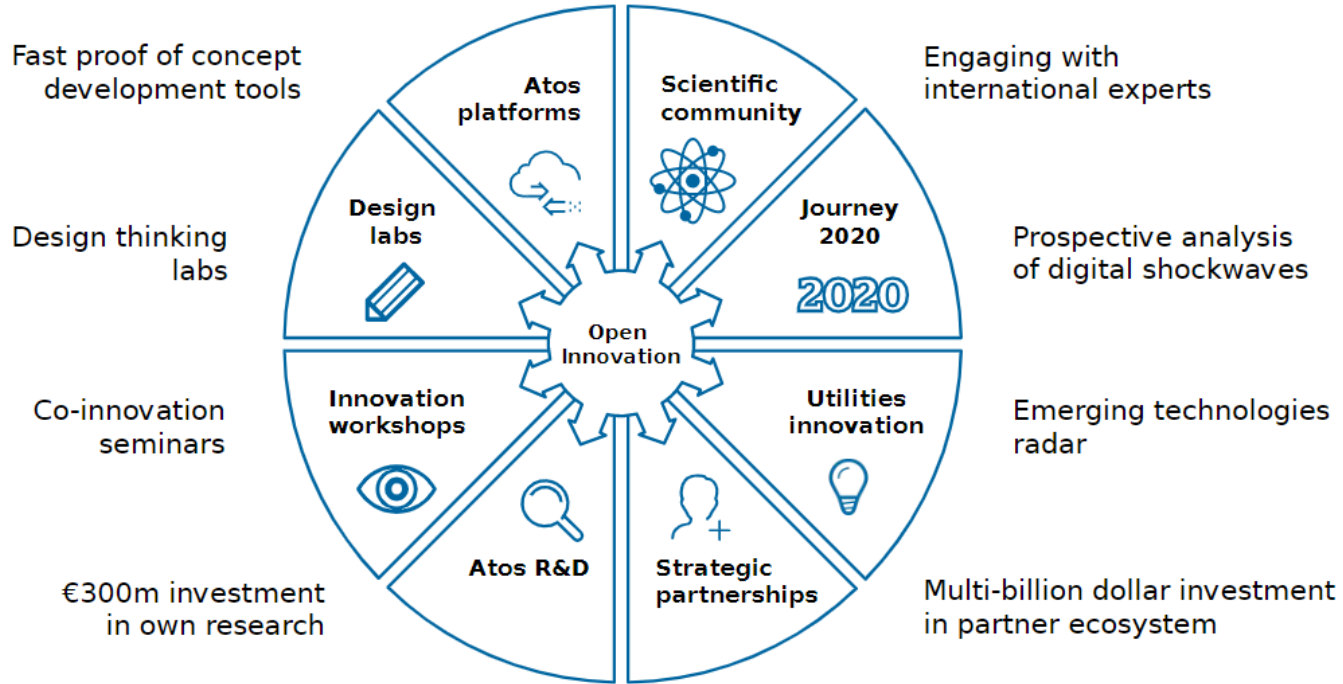
Defining the Cloud Transformation Plan

Discover Define, Design and Describe Cloud Transformation



Atos Innovation approach

For research to customer innovation support

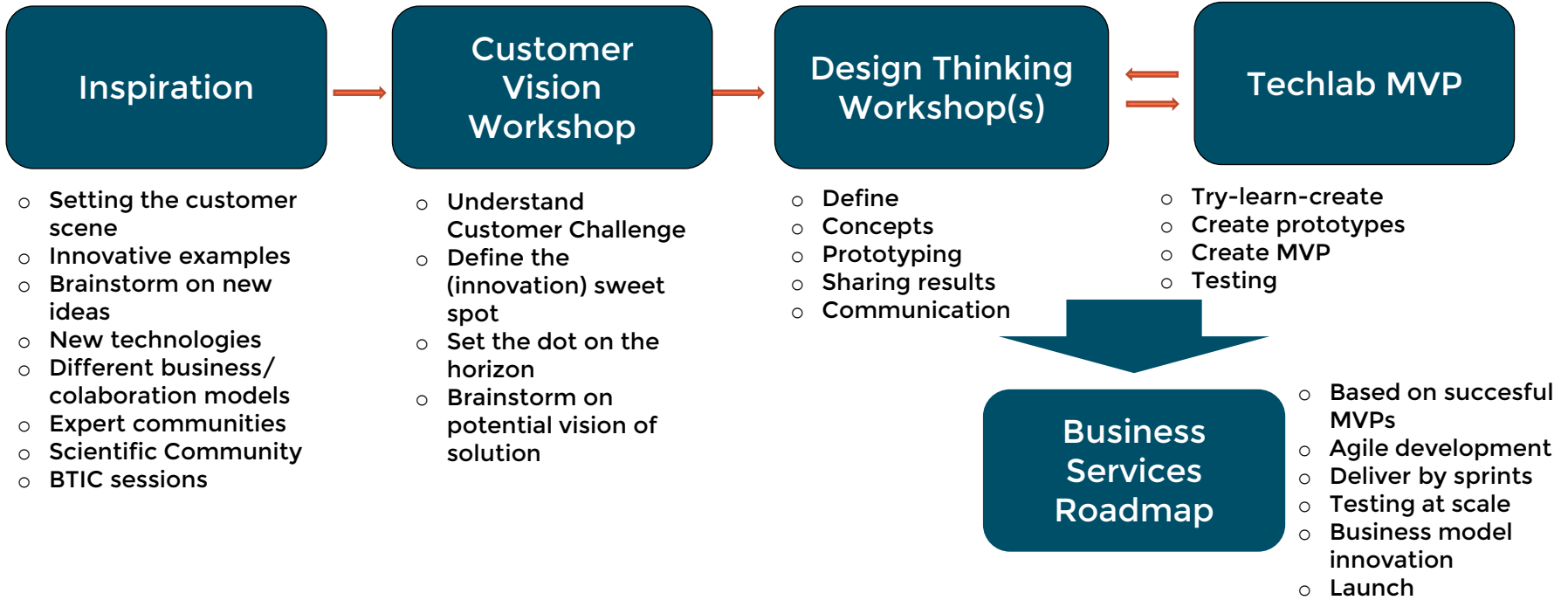


Our journey to Applied Innovation

Agile Business Enablement powered by Design Lab

Technology Lab
Try - Learn - Create 

Facilitated by Atos Design Lab



The logo for EVIDEN, consisting of the word "EVIDEN" in a white, outlined, sans-serif font. The background of the slide features a large, abstract, 3D-rendered knot or interlocking ribbon structure in shades of teal and dark blue, set against a dark teal gradient background.

EVIDEN

Thank you

For more information please contact:
Jasper Bremer - Global Lead DTSI
M+ 31 6 51366470
jasper.bremer@atos.net

Confidential information owned by BULL SAS, to be used by the recipient only. This document, or any part of it, may not be reproduced, copied, circulated and/or distributed nor quoted without prior written approval from BULL SAS.