

EVIDEN

BullSequana SH series

The best choice to
leverage the full potential
of SAP HANA

Intro

SAP® has integrated **SAP HANA®** at the very heart of **its strategy**: a database that delivers exceptional real-time performance to enable new business opportunities. To be successful, the introduction of SAP HANA needs **a very strong, secure and performant infrastructure.**

SAP HANA in a few words

SAP HANA is a multi-model database that **stores data in its memory** instead of keeping it on a disk. The column-oriented in-memory database design allows you to run **advanced analytics alongside high-speed transactions – in a single system.** Why is this so important? Because it lets companies process massive amounts of data with near-zero latency, query data in an instant, and become truly data-driven. By storing data in column-based tables in main memory and **bringing online analytical processing (OLAP) and online transactional processing (OLTP) together.**

Focus product

Introducing our BullSequana SH series designed to offer a secure and full potential use of your SAP HANA landscape. Our server is perfectly adaptable to scale-up configurations as recommended by SAP for HANA deployments.

Max Configuration for SAP HANA use case

From 2 to 16 sockets (CPUs) in a single server

Scales in 2-socket increments to optimize your investment perfectly sized for your SAP HANA database

4th and 5th Gen Intel® Xeon® Scalable processors

Up to 32TB DDR5 DRAM

Up to 56 PCIe Gen5 hot-swappable slots

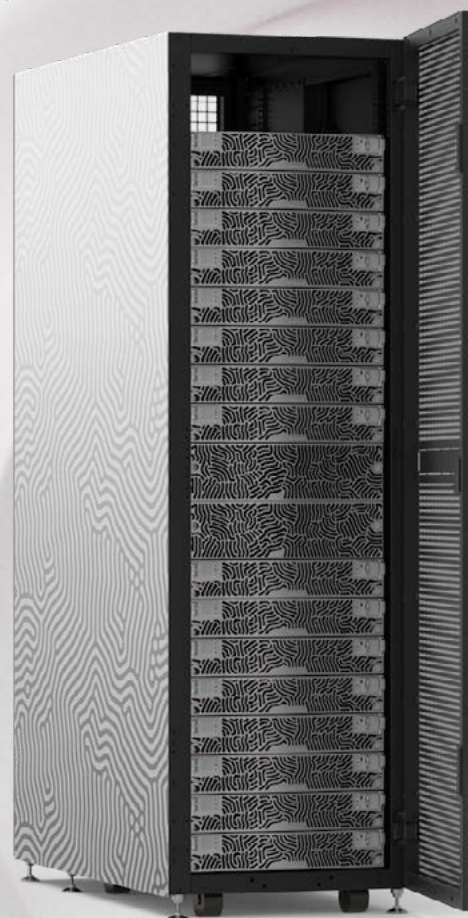
Up to 80 NVMe SSDs

Hotplug redundant 80+ Titanium PSUs

Note :

Features below are indicated for SAP HANA solutions, BullSequana SH offer extending features for other uses cases, check it here

> [link to BullSequana SH webpage](#)



Key benefits

Unprecedented scalability



Your need

Scalability is an essential prerequisite for straightforward growth and protecting your investment, while optimizing your **Total Cost of Ownership (TCO)**. SAP HANA often starts with a limited implementation, which rapidly evolves. This means being able to easily access more processors (cores) and larger memory capacities to absorb data growth.



Our offering with BullSequana SH series

- BullSequana SH supports your SAP HANA needs **up to 64TB memory and up to 16-socket** while enabling the configuration that exactly fits your business needs.
- With the ability to **scale up by 2-socket increments**, you can avoid over-allocation of resources for future demand and reduce your carbon footprint.
- For full SAP HANA performance based on SAP code awareness with 4-socket blocks granularity, BullSequana SH also offers **fully optimized 4-socket blocks** configurations on its complete range.

Strong security & reliability



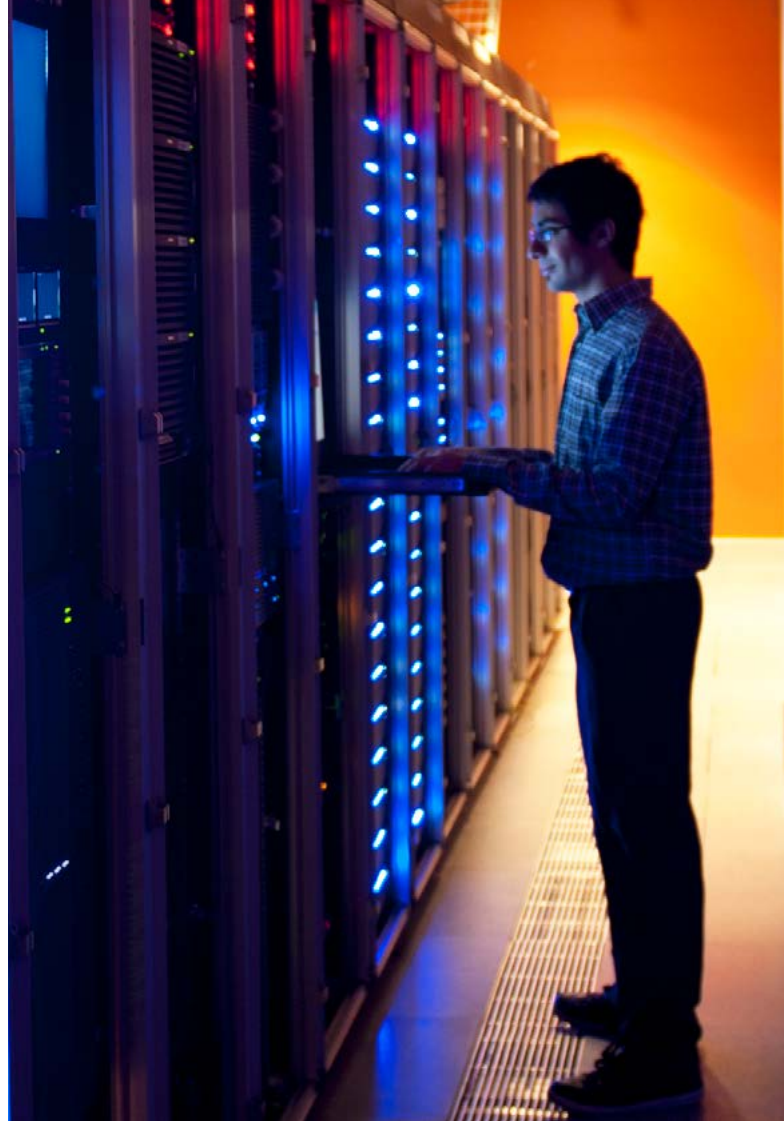
Your need

With increasing cyberattacks, security is no longer an option for your critical business running on SAP HANA. **BullSequana SH helps organizations to protect their data**, avoiding downtimes and cyberattacks.



Our offering with BullSequana SH series

- Several thousand control points per rack and early warning features that anticipate potential breakdowns and simplify preventive maintenance.
- In addition to embedded **Intel 4th and 5th Gen Intel Xeon Scalable Processors** native hardware security features, BullSequana SH also provides hot plug redundant 80+ Titanium PSUs and **hot swap components**.
- For example, to **tackle the memory failures** concerns, we provide a Memory RankSparing mechanism which enables to automatically copy the data from the failing rank to the spare rank with no performance penalty.
- To protect their data from the core to the cloud by creating **a chain of trust** without compromising performance



Exceptional flexibility



Your need

SAP HANA solutions on BullSequana SH offers the possibility to deploy either **SAP HANA appliances**, combining fully certified hardware granting maximum performance and software components, or **SAP HANA Tailored Data center Integration (TDI) solutions**. TDI offers more openness and freedom of choice to configure the layer for SAP HANA by re-using existing storage or network and therefore optimizing your TCO. TDI (phase 5) can also allow to **reduce your hardware investment** by using relaxed configuration rules (lower core count CPUs, reduced memory or storage). For both options, BullSequana SH is the right choice.



Our offering with BullSequana SH series

- BullSequana SH series for SAP HANA is based on the BullSequana SH server including the best-in-class **NVMe storage**, either internal or external with Eviden storage partners.
- BullSequana SH integrated solution for HANA is delivered with **a pre-installed and pre-tested infrastructure** with certified Linux OS (Red Hat® or SUSE®) and SAP HANA software. Therefore, providing a turnkey solution ready to deploy at customer site.

Our Value Proposition



TCO reduction / Consolidation

addresses database sprawl
reduces operational costs
drives down Oracle software costs



Great flexibility

meet customer business needs
choice of storage and processor
Integrated System fully industrialized



High scalability

pay as you grow
no need for over-provisioning
flexible and easy upgrade path



High Performance

highest performing Intel CPUs
all-flash arrays ensuring very high IOPS and consistent low latency (<1ms)



High Availability

at infrastructure, VM and database levels
continuous data protection and availability



Fully certified by Oracle

Oracle Linux certified



No vendor lock-in



Benefit from our Exclusive Eviden Industrialization Service

Eviden services

With our BullSequana SH benefit from exclusive services from Eviden

- Design your ready-to-use infrastructure
- Benefit from a tailored industrialization process
- Flex and Scale with Opex or Capex
- Unique manufacturer in Europe

Gain flexibility

Design as you need
add on process

Go faster

Fastest supply
on site plug & play

Reduce risks

No unexpected costs
highest quality and
repeatable process

Thanks to our strong partnership with SAP, we are able to provide a sizing expertise to design the most suitable infrastructure for your needs.

Contact us: saphanaexpertsizing@eviden.com



Health



Retail



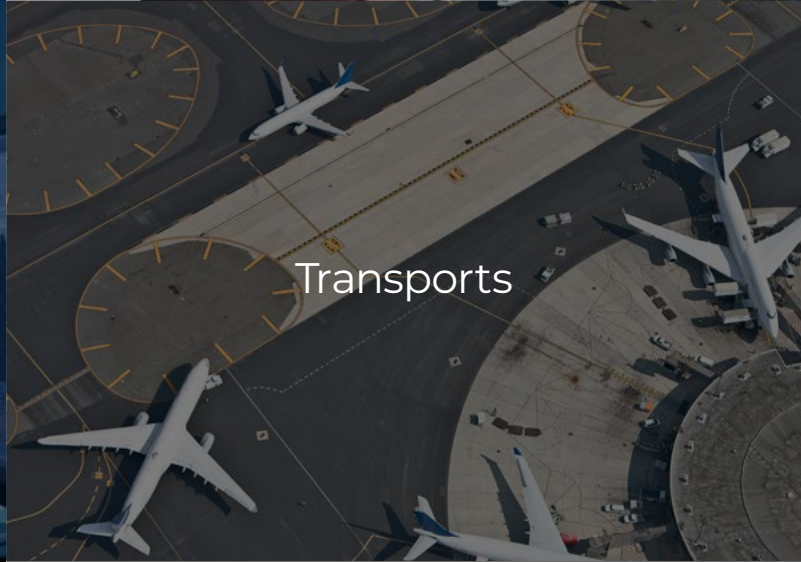
Cloud providers



Telco operators



Administration
governments



Transports



Finance
companies



Energy



Connect with us



eviden.com

Eviden is a registered trademark © Copyright 2024, Eviden SAS – All rights reserved.