

EVIDEN

BullSequana EX series

Envision trusted AI
from edge to cloud

Edge computing for AI revolution

GLOBAL DEMAND FOR DATA PROCESSING
AT THE EDGE HAS BEEN GROWING FAST

The AI revolution has created an enormous demand for compute capacities. AI apps require large amounts of data to train and run AI models effectively. The primary need is for specialized hardware designed specifically for AI workloads. AI revolution is driving a need for distributed computing architectures that can handle the massive scale of AI applications. Including both centralized and decentralized architectures such as edge computing.

BY 2035, AI COULD HELP INCREASE

**global productivity
by 40%.**



Edge computing: The ideal solution to break frontiers for your IT infrastructure.

THE USE OF EDGE COMPUTING
HAS BECOME INCREASINGLY IMPORTANT
WITH THE RISE OF AI REVOLUTION.

AI applications require large amounts of data
and compute resources. By processing data closer
to the source with edge computing,
AI applications can operate more efficiently with:



REDUCE THE LATENCY

Real time data processing for more responsive decision-making.



IMPROVE RELIABILITY

Reducing the risk of disruption for critical environments.



ENHANCE SECURITY

Keeping sensitive data closer to the source.

By processing data closer to where it is generated, edge computing can reduce the time it takes to transmit data. This can be critical for applications and all AI solutions.



REDUCE NETWORK CONGESTION

Improving overall network performance.

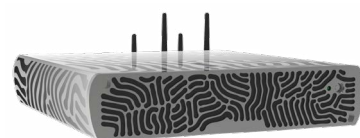


ENABLE POWERFUL AI INFERENCE

Through local GPU acceleration.

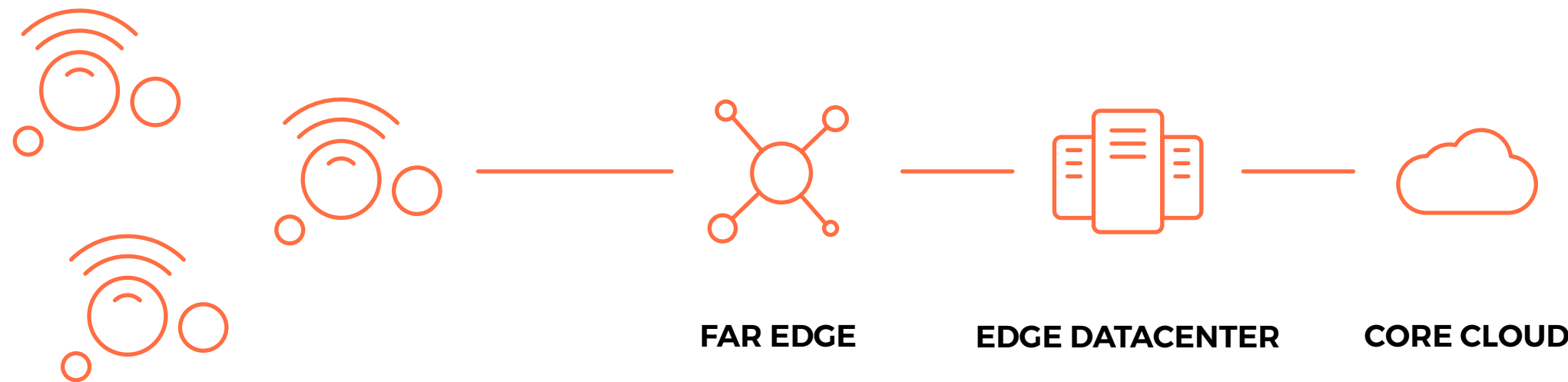
BullSequana EX series

BullSequana EX SERIES, DESIGNED TO MEET ALL YOUR REQUIREMENTS



BullSequana EXD

Branch offices, shop floors, cinemas, restaurants, train stations, airports, petrol stations, factories, platforms, cell tower.



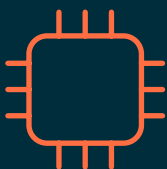
BullSequana EXR

Industrial Edge Datacenters where extended temperature range is required, Telco Edge Datacenters .



An edge server, ready for the most demanding environments

- Environmentally hardened 0°C - 45°C
- 5-95% humidity
- Wireless high perf connectivity 5G/Wifi



Flexible choice of powerful CPU and GPU options, while keeping the same chassis

GPU : supports Nvidia GPUs with up to 350W TDP



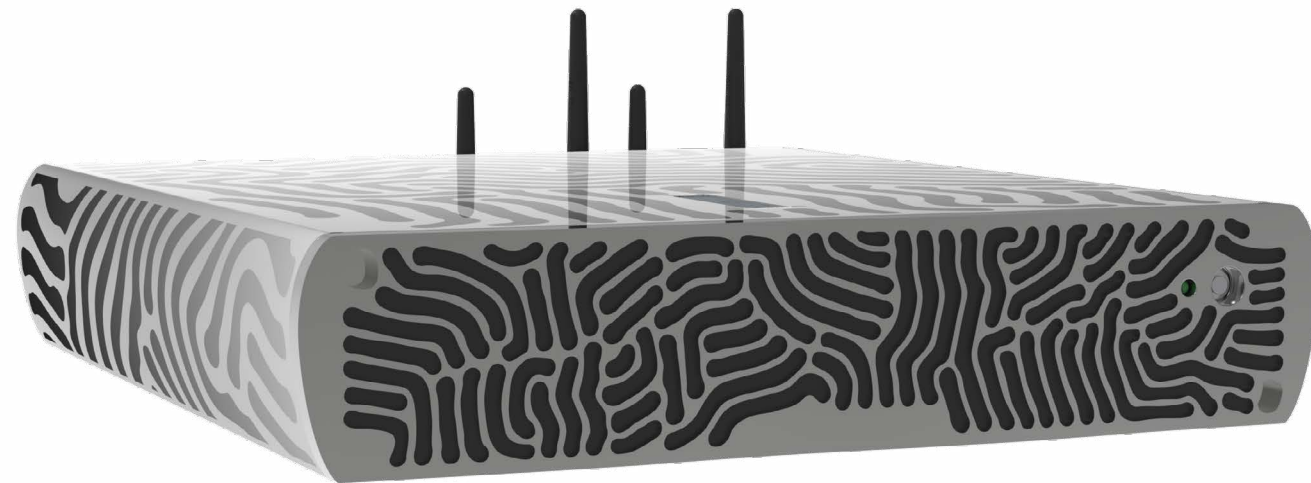
CPU : supports 4th and 5th Gen Intel® Xeon® processors with up to 32 cores (185W TDP max)



Flexible storage

BullSequana EXD

Designed for the Far Edge



- **POWERFUL FAR EDGE SERVER**
with leading AI inference and training capabilities
- **SUPPORTING THE POWERFUL NVIDIA GPUs**
- **FLEXIBLE INSTALLATION OPTIONS**



Deskside



Wallmount



Shorth depth Rack
(48cm)

BullSequana EXR

Designed for the Edge Datacenter



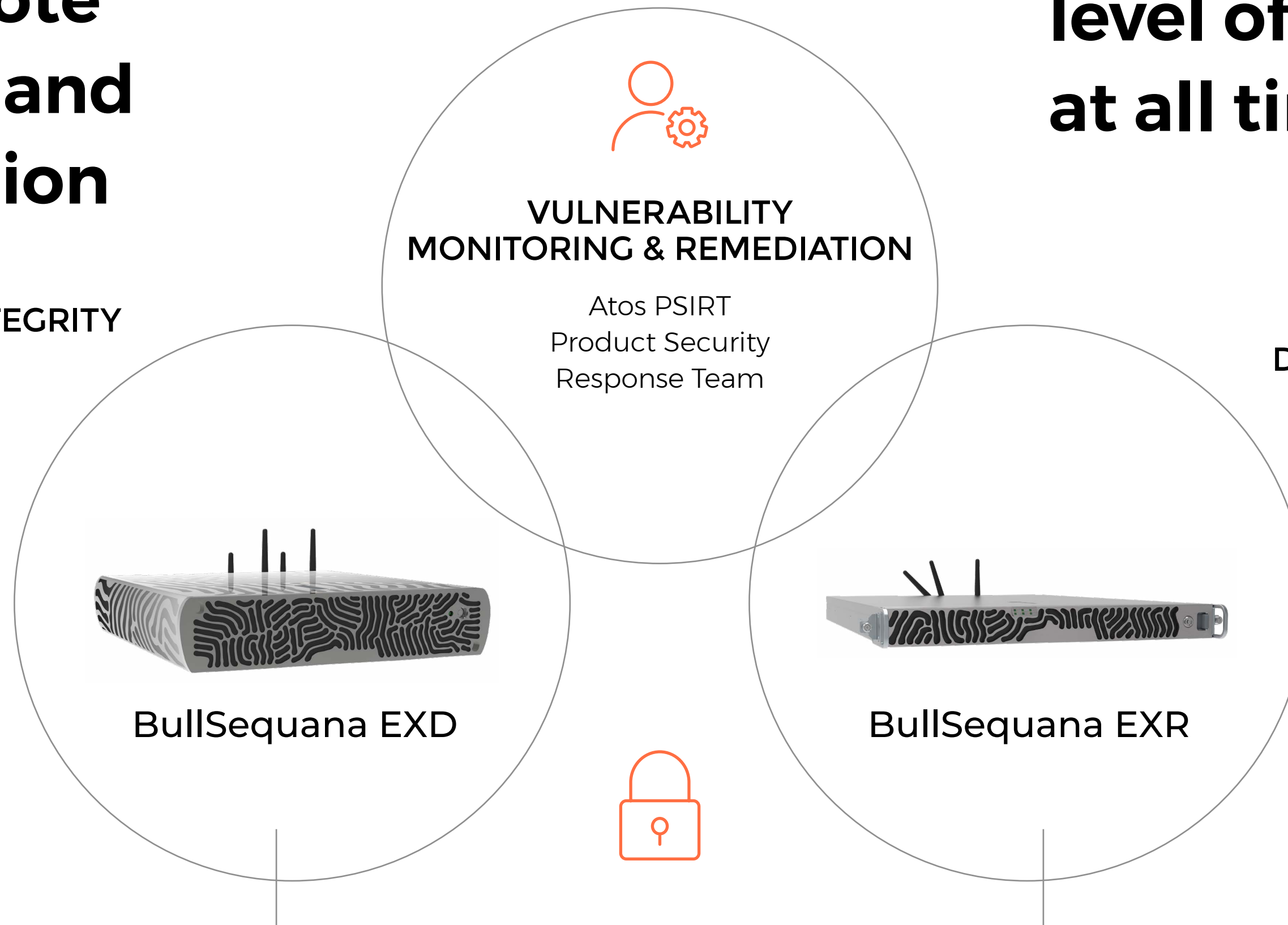
- **HIGH DENSITY EDGE DATACENTER SERVER** with
powerful AI inference and training capabilities
- **SUPPORTING THE POWERFUL NVIDIA GPUs**
- **HIGHEST DENSITY FOR AI INFERENCE**
1U Rack (640mm depth)
- **FLEXIBLE DISK OPTIONS**
Up to 10 high speed NVMe disks
SATA disk options
Raid options

Secure remote monitoring and administration

Ensure the highest level of data security at all times.

SYSTEM SECURITY & INTEGRITY

- Atos Root of Trust
- NIST 800-193 compliant
- Secure boot
- Secure Firmware updates (full RedFish)
- Turn-Key Appliances (preload services)
- European factory/sovereignty



DATA SECURITY

- Optional self-encrypted disks (SED)
- TPM 2.0
- Trustway HSM signed keys

Keep your expectations high, but your carbon footprint low



Eviden factory, Angers, France
R&D, Les Clayes & Grenoble, France

**EVIDEN DECARBONATION
LEVEL AGREEMENT (DLA)**
to help clients capture,
measure, report on and reduce
the overall carbon footprint of
the BullSequana EX platform.



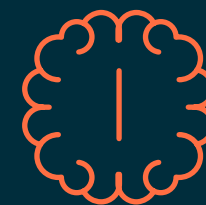
LARGE IMPROVEMENT IN COMPUTE DENSITY



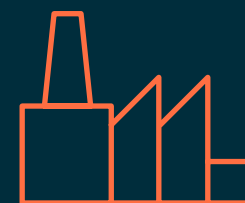
USE OF MORE ENERGY EFFICIENT COMPONENTS



NO OVER-PROVISIONING OF RESOURCES
FOR FUTURE DEMAND



INTELLIGENT POWER MANAGEMENT
FEATURES AT THE SYSTEM LEVEL



FACTORY INDUSTRIALIZATION SERVICES



COMPLIANT WITH ENVIRONMENTAL REGULATIONS

USE CASES

Adapt easily your edge compute to your AI models with our computer vision platform offering

Computer Vision is a rapidly evolving field within Artificial Intelligence which has proved instrumental for a variety of applications ranging from manufacturing to healthcare to autonomous driving. The main challenge of this area is to not only to provide an accurate and robust AI model but also an end-to-end solution with continuous improvement.

Eviden Computer Vision Platform is a unique end-to-end computer vision platform providing pre-trained & customizable AI models powered by BullSequana server range and enriched by Atos computer vision experts through worldwide experts labs..

[LEARN MORE](#)



● KEY CAPABILITIES

Behaviour detection
Tag & track
Facial recognition
Environment sensing
Object detection
Forensic
Traffic monitoring
Non-facial recognition
License plate recognition
Watchlist alert
Heatmap
Touchless access control
Quality inspection

● LEADING COMPUTER VISION MARKET

Up to 5,000+ streams
600+ projects in 36 countries

19 nuclear, oil and gas, and energy sites

60+ border, transport, and police authorities

400M+ airport passenger journeys protected

● KEY FEATURES

Rule based sce engine
Calibrate alarms to only be raised on specific behaviours or scenarios, minimising false and nuisance alarms.

Incident Response
Graphical-User-Interface (GUI) Maintain or search a past track on every individual, vehicle, or object to generate rich and accurate metadata unique to each object in the scene.

Kibana Visual Reports
Visualize collected data in real-time and retrospectively when investigating historic data

Delivers fast, secure, and scalable inference for Large Language Models at the edge

Large Language Models (LLMs) and Generative AI (Gen AI) are revolutionizing industries by improving customer service, automating processes, and optimizing field operations. By conducting inference on edge servers, organizations can function without cloud connectivity, ensuring data privacy and security. This method also boosts the responsiveness of AI solutions by reducing latency and enabling immediate information processing.

Eviden solves business challenges for large organizations by building end to end AI and Gen AI solutions, industry-specific accelerators and harnessing the latest technologies, including MLOps and generative AI.

[LEARN MORE](#)

● KEY CAPABILITIES

RAG

Document AI

Document fraud detection

AI-Augmented Call Center

Call Center Automation of collections QA process

CodeAssistant

TechBuddy Maintenance Assistant

● INDUSTRIES

Manufacturing

Financial and Insurance Services

Retail & E-commerce

Health Care & Life science

Public Sector

Energy & Utilities

Eviden offers
an end-to-end
Advanced
Computing range
designed for AI



EVIDEN SERVER PORTFOLIO FOR AI

AI OFFERING

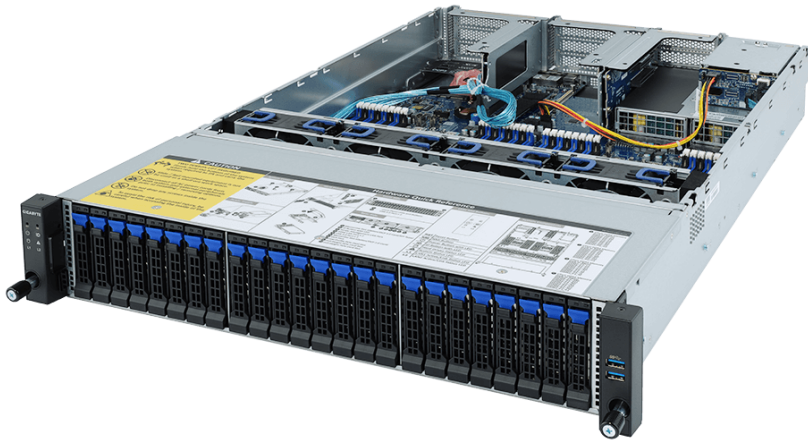
FINE TUNING



BullSequana EX

COMPUTER VISION PLATFORM
GEN AI PLATFORM

Train on increasing AI model complexity



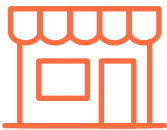
BullSequana SA



BullSequana AI

SIMULATION PLATFORM

ALL DESIGNED FOR



RETAIL



TRANSPORT



CITIES



STADIUMS



MANUFACTURING



ENERGY & UTILITIES



HEALTH

**Our services empower
Edge technologies
and provide secure
access locally on
machine-interface.**

- **PICK AND ADJUST THE SERVICES YOU NEED**
hardware and AI software
- **TURNKEY DEPLOYMENTS**
design your infrastructure ready to use.
- **BENEFIT FROM A TAILORED INDUSTRIALIZATION PROCESS:**
Fully fledged validation report
- **EVIDEN GEN AND VISION AI SOLUTIONS**
- **EUROPEAN SOVEREIGNTY**
Unique manufacturer in Europe

Gain flexibility

Design as you need
Add on process



Go faster

Fastest supply
On site plug & play

Reduce risks

No unexpected costs

Highest quality and
repeatable process



EVIDEN